

# Pučišća

A P A R T M A N I



## Accommodation and facilities

**Location:** Pučišća, Island of Brač  
**Category:** \*\*\*  
**Opened:** 2003

**Total number of beds:** 10+3  
**Number of fixed beds:** 10  
**Number of additional beds (pull-out sofas):** 3

**Number of accommodation units:** 3  
**Apartments (A2):** 1  
**Apartments (A2+1):** 1  
**Apartments (A6 +2):** 1

*Equipment in all units*  
 Satellite TV/air conditioning  
*Apartment kitchen equipment*  
 4-ring hob/refrigerator/freezer/hood/toaster/  
 coffee filter machine

*Also available*  
 Parking

## Advantages of the location - distances

Town centre:	500 m	Clinic:	1,000 m
Sea:	300 m	Bureau de change:	800 m
Beach:	300 m	Petrol station:	20 km
Grocery shop:	400 m	Bus stop:	800 m
Pharmacy:	1,000 m	Ferry port:	27 km

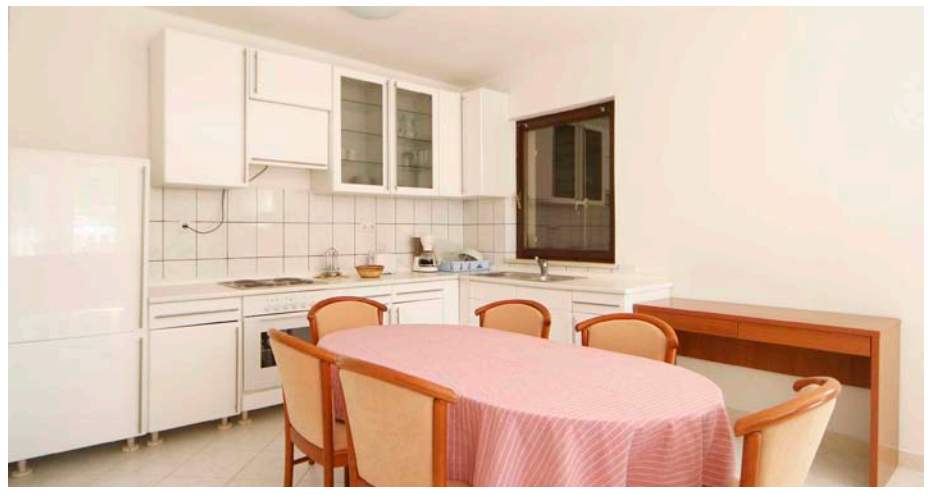


## Apartments Pučišća • Pučišća • Island of Brač • Croatia



Apartments Pučišća are in Pučišća itself, on the hill above the bay and a five-minute walk from the village centre. The house contains three apartments of different sizes, each with its own entrance, and although each apartment is rented as a separate unit, you can rent the entire house for a larger group of family or friends. All three apartments have a wonderful view of the sea, Pučišća and the entrance to the bay.

The stone in this area is different from any other. Builders throughout history have recognised its quality, as have many others who have exported it to far-flung corners of the world and incorporated it into their buildings. And everyone who visits Pučišća, the capital of Brač stone, will notice it too.

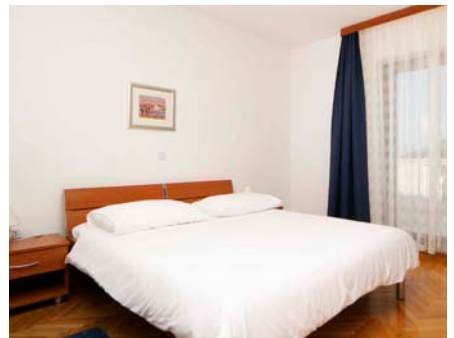




**Accommodation details**

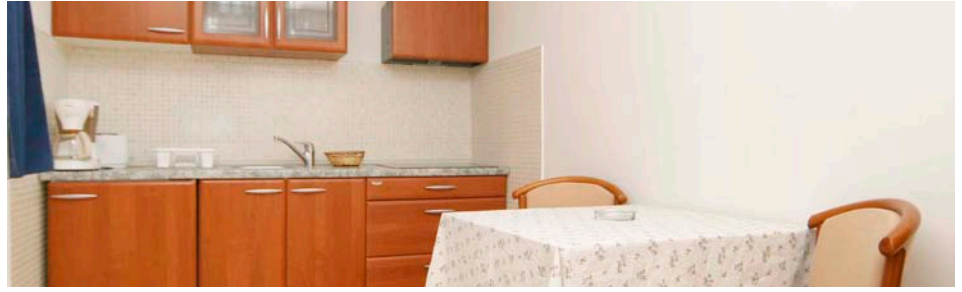
One-room apartment  
A2

Surface area of apartment: 30m<sup>2</sup>  
**Sleeping capacity**  
 Number of fixed beds: 2  
**Includes**  
 Bedroom  
 Kitchen/sitting room  
 Bathroom with shower unit  
 Covered balcony



One-room apartment  
A2 + 1

Surface area of apartment: 50m<sup>2</sup>  
 Sea view  
**Sleeping capacity**  
 Number of fixed beds: 2  
 Number of additional beds (pull-out sofas): 1  
**Includes**  
 Bedroom (beds can be separated)  
 Kitchen/sitting room  
 Bathroom with shower unit  
 Covered balcony



Three-room apartment  
A6 + 2

Surface area of apartment: 80m<sup>2</sup>  
 Sea view  
**Sleeping capacity**  
 Number of fixed beds: 6  
 Number of additional beds (pull-out sofas): 2  
**Includes**  
 3 bedrooms  
 Kitchen/dining room / sitting room  
 2 bathrooms (one with shower unit, one with bath)  
 Balcony  
**Bedrooms**  
 Standard double rooms: 1  
 Double rooms with beds that can be separated: 2  
**Also available**  
 Barbecue

**Other information**

Minimum stay: depends on season  
 Surcharge for a stay of less than three nights (+30%).  
  
 Check in: from 16:00  
 Check out: by 10:00  
 Staff: maid (non-resident)  
 Notes: no pets allowed

**Price includes:**

Daily rent / electricity / water / cleaning / linen / towels  
 Paid cleaning frequency: **initial and final cleaning daily**  
 Towel change frequency: **every three days**  
 Linen change frequency:

*Tourist tax not included in price.  
 Bookings for fewer than three nights are subject to a 30% surcharge on the cost of basic services.*

**Pučišća**  
 APARTMANI



Central sales  
 Orvas Hotels  
 Tel: + 385 (0)21 735 393  
 Fax: + 385 (0)21 735 090  
 e-mail: orvas-hotels@orvas.hr  
 skype: booking.orvas-hotels

